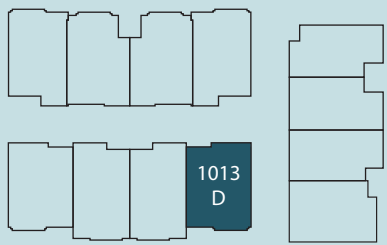




MIRRA  
HOMES

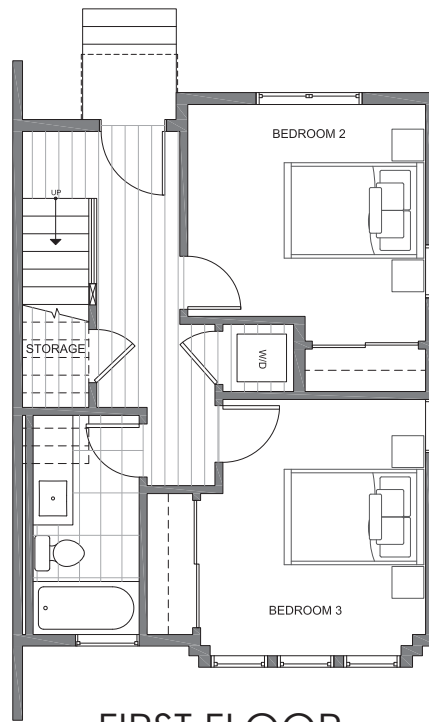
1013D  
6th AVE N

SQ. FOOTAGE: 1,520 SF  
STORAGE: 95 SF  
ROOF DECK: 285 SF  
BEDS: 3  
BATHS: 1.75  
PARKING: 1 CARPORT

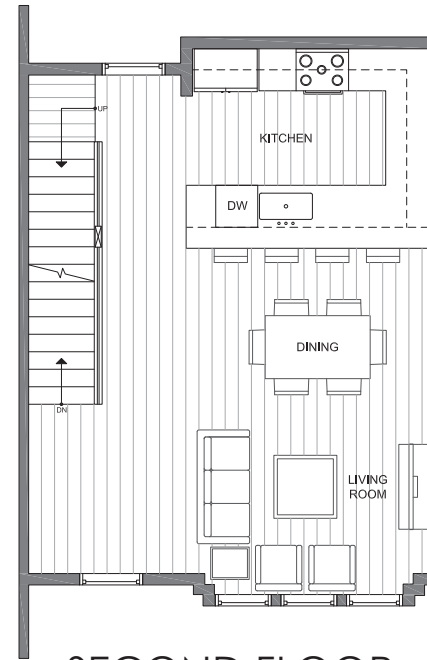


ALLEY

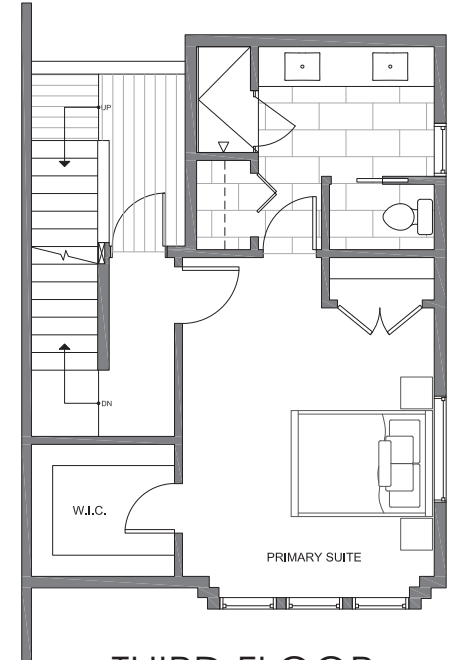
6th AVE N



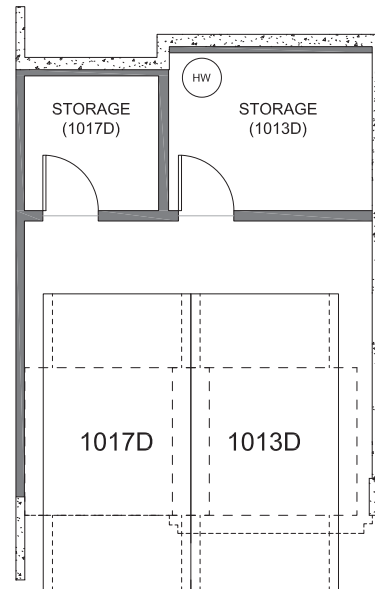
FIRST FLOOR



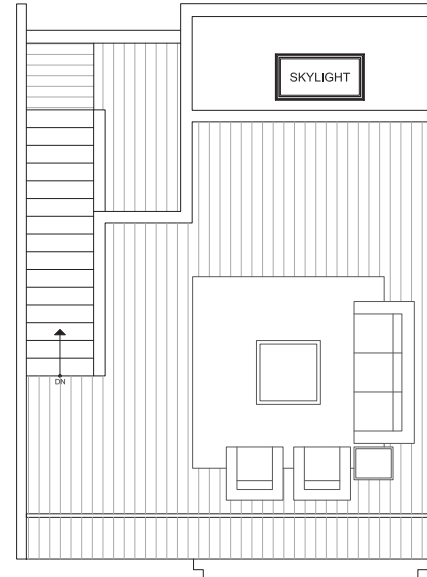
SECOND FLOOR



THIRD FLOOR



STORAGE + PARKING



ROOF DECK

MIRRA ID# 122H

10/30/2022

Disclaimer: Floor plans and site plans are for illustrative purposes only. In a continuing effort to improve products and designs, final construction elevations, square footages, floor plans and/or materials and colors may vary. Buyer to verify to their own satisfaction.

