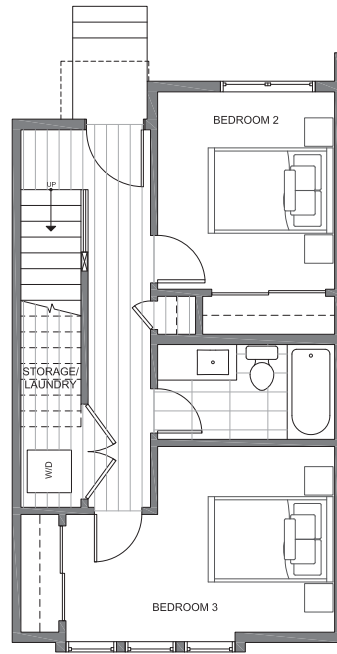
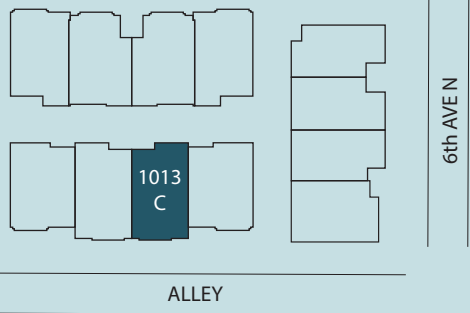




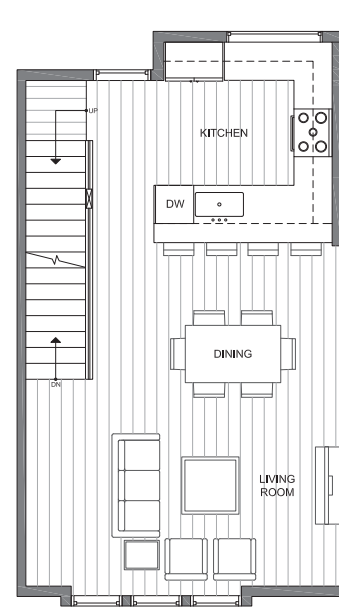
MIRRA HOMES

1013C 6th AVE N

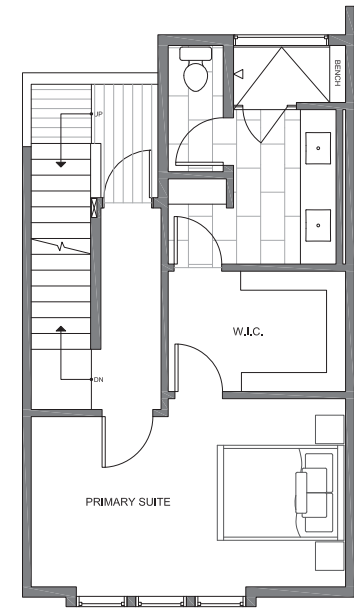
SQ. FOOTAGE: 1,493 SF
STORAGE: 80 SF
ROOF DECK: 270 SF
BEDS: 3
BATHS: 1.75
PARKING: 1 CARPORT



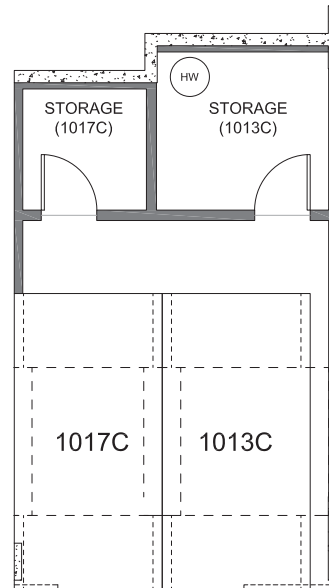
FIRST FLOOR



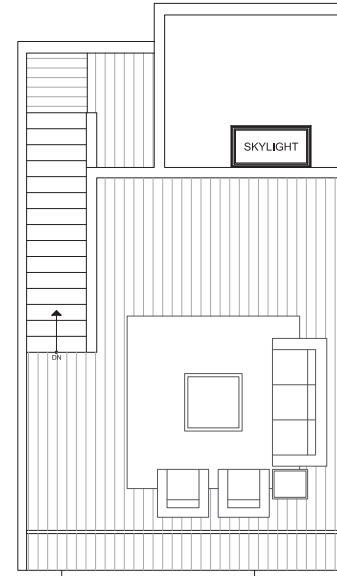
SECOND FLOOR



THIRD FLOOR



STORAGE + PARKING



ROOF DECK

MIRRA ID# 122G

10/30/2022

Disclaimer: Floor plans and site plans are for illustrative purposes only. In a continuing effort to improve products and designs, final construction elevations, square footages, floor plans and/or materials and colors may vary. Buyer to verify to their own satisfaction.

