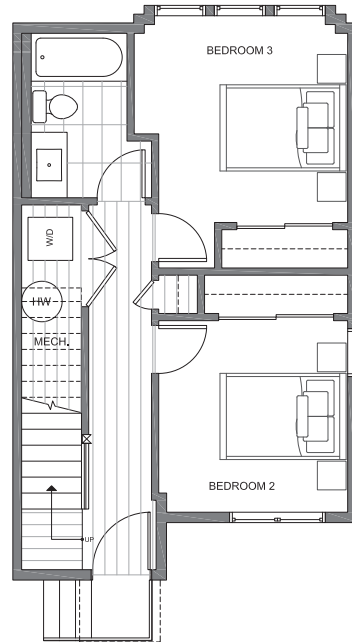
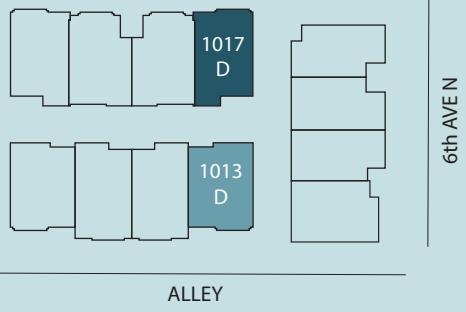




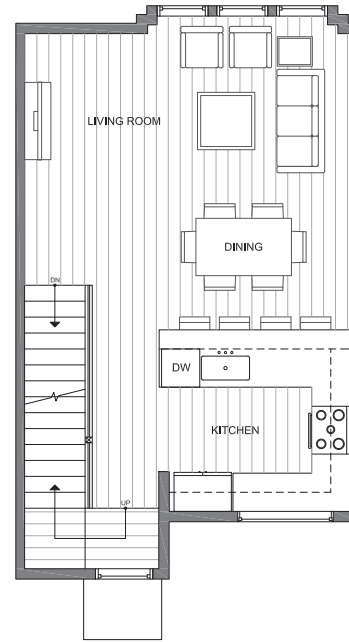
MIRRA
HOMES

1017D
6th AVE N

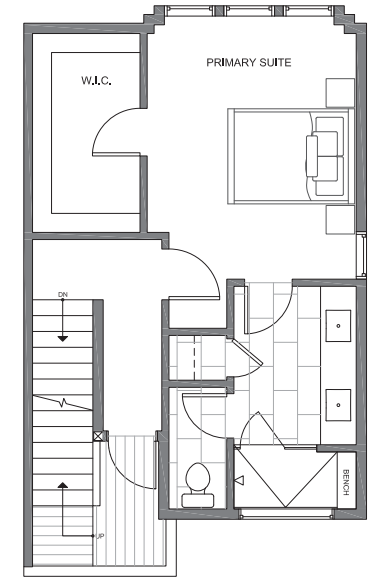
SQ. FOOTAGE: 1,473 SF
STORAGE: 53 SF
ROOF DECK: 285 SF
BEDS: 3
BATHS: 1.75
PARKING: 1 CARPORT



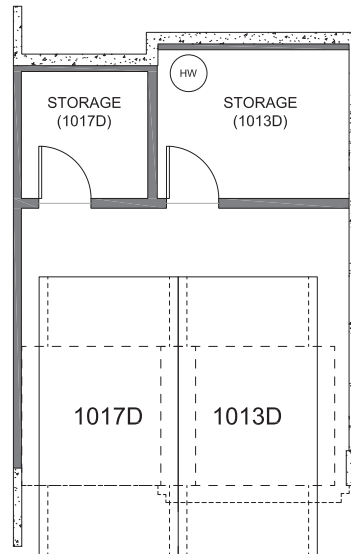
FIRST FLOOR



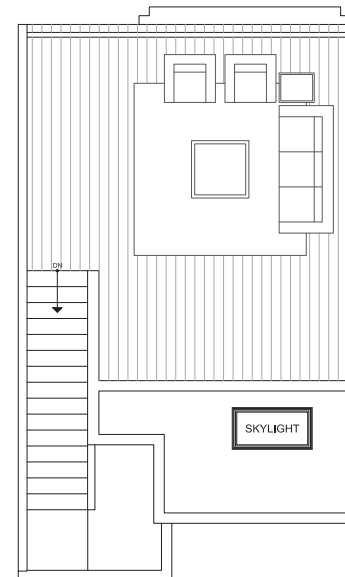
SECOND FLOOR



THIRD FLOOR



STORAGE + PARKING
(CARPORT AREA OF 1013D)



ROOF DECK

MIRRA ID# 122D

12/4/2022

Disclaimer: Floor plans and site plans are for illustrative purposes only. In a continuing effort to improve products and designs, final construction elevations, square footages, floor plans and/or materials and colors may vary. Buyer to verify to their own satisfaction.

