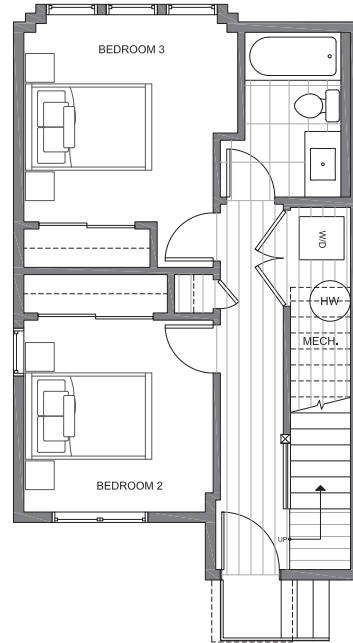
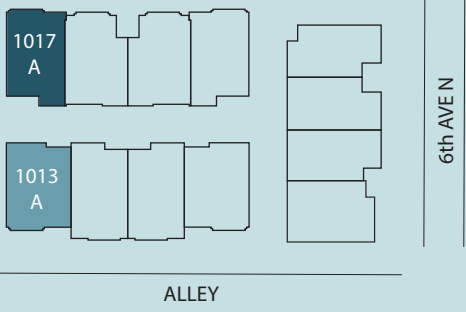




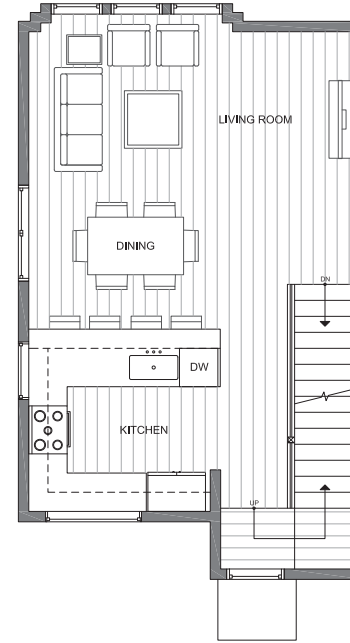
# MIRRA HOMES

## 1017A 6th AVE N

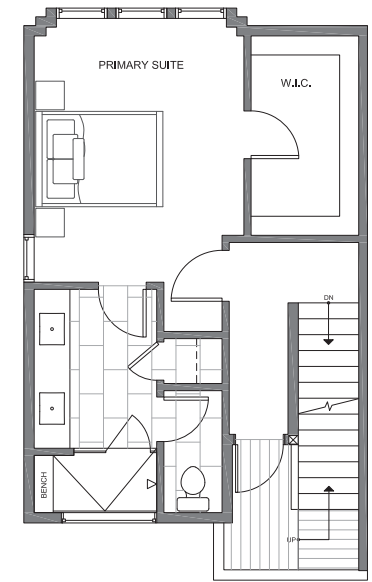
SQ. FOOTAGE: 1,473 SF  
STORAGE: 50 SF  
ROOF DECK: 285 SF  
BEDS: 3  
BATHS: 1.75  
PARKING: 1 CARPORT



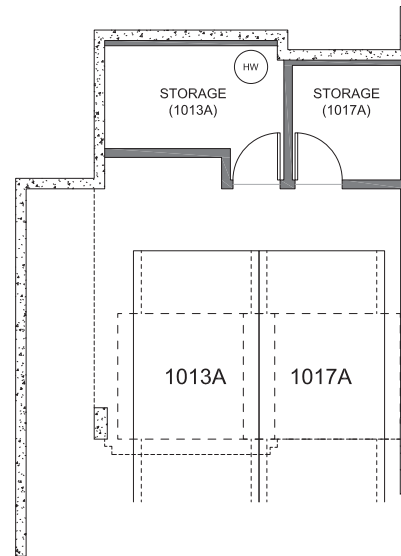
FIRST FLOOR



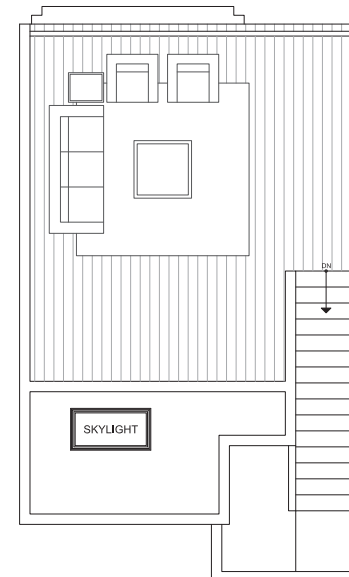
SECOND FLOOR



THIRD FLOOR



STORAGE + PARKING  
(CARPORT AREA OF 1013A)



ROOF DECK

MIRRA ID# 122A

12/4/2022

Disclaimer: Floor plans and site plans are for illustrative purposes only. In a continuing effort to improve products and designs, final construction elevations, square footages, floor plans and/or materials and colors may vary. Buyer to verify to their own satisfaction.

