



MIRRA
HOMES

1021D
6th AVE N

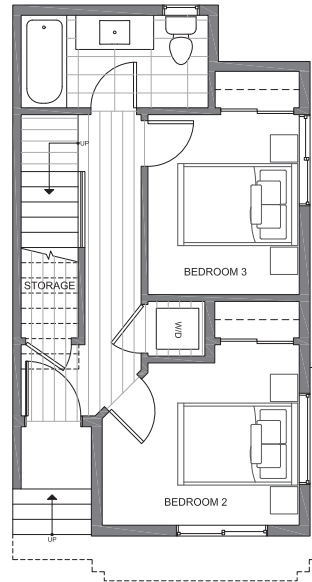
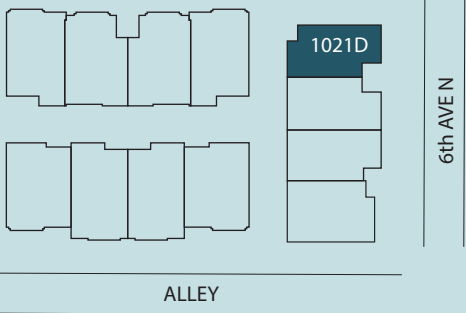
SQ. FOOTAGE: 1,540 SF

ROOF DECK: 345 SF

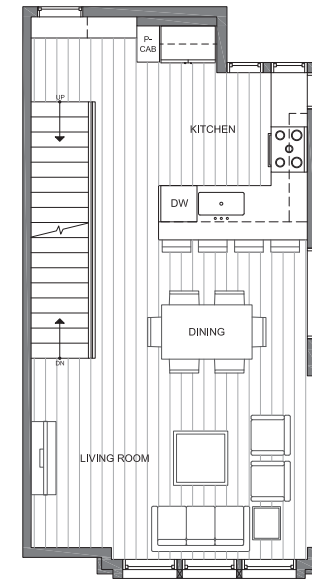
BEDS: 3

BATHS: 1.75

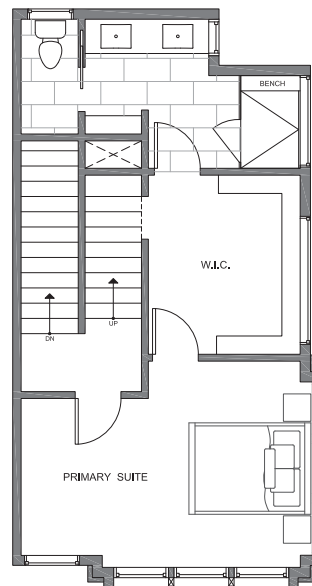
PARKING: 1 CARPORT



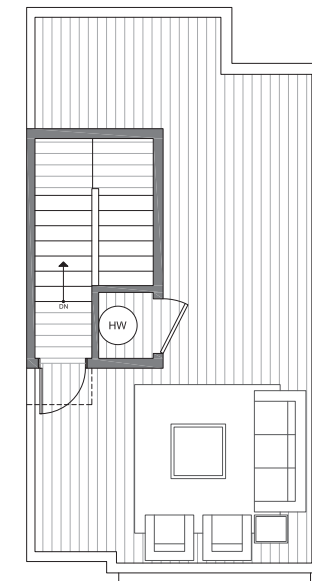
FIRST FLOOR



SECOND FLOOR



THIRD FLOOR



ROOF DECK

MIRRA ID# 121D

12/4/2022

Disclaimer: Floor plans and site plans are for illustrative purposes only. In a continuing effort to improve products and designs, final construction elevations, square footages, floor plans and/or materials and colors may vary. Buyer to verify to their own satisfaction.

