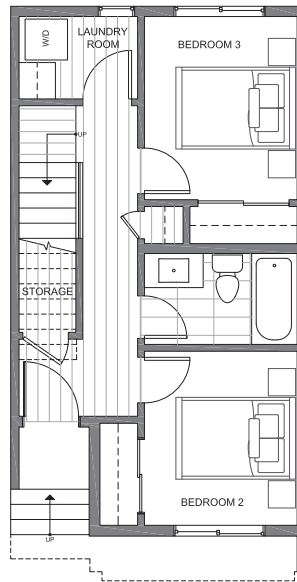
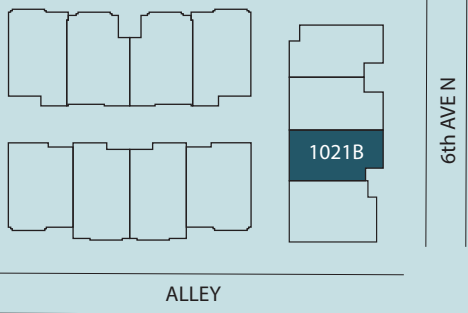




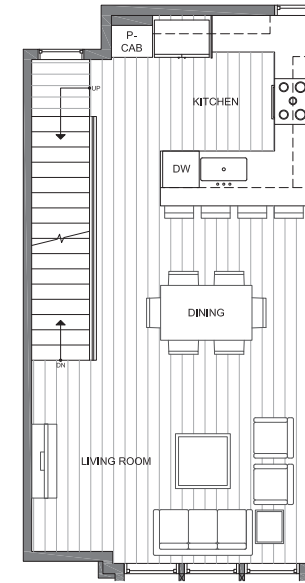
MIRRA  
HOMES

1021B  
6th AVE N

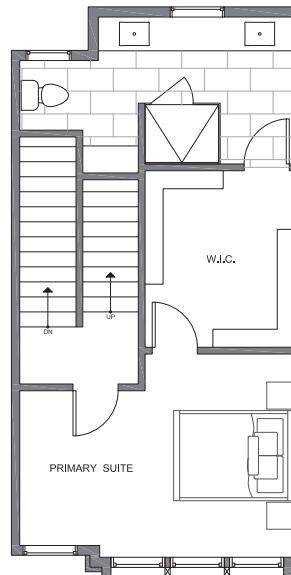
SQ. FOOTAGE: 1,547 SF  
ROOF DECK: 350 SF  
BEDS: 3  
BATHS: 1.75  
PARKING: 1 CARPORT



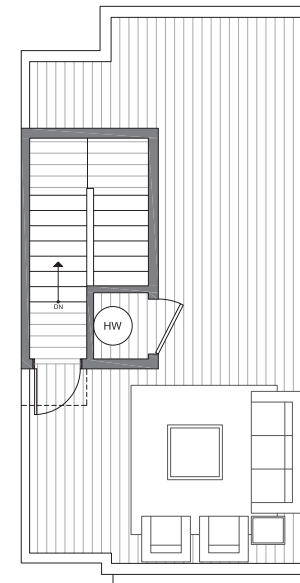
FIRST FLOOR



SECOND FLOOR



THIRD FLOOR



ROOF DECK

MIRRA ID# 121B

12/4/2022

Disclaimer: Floor plans and site plans are for illustrative purposes only. In a continuing effort to improve products and designs, final construction elevations, square footages, floor plans and/or materials and colors may vary. Buyer to verify to their own satisfaction.

