

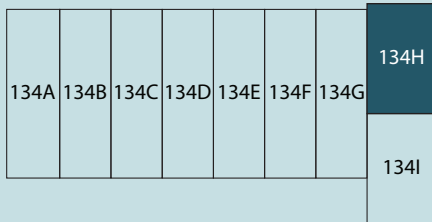


MIRRA
HOMES

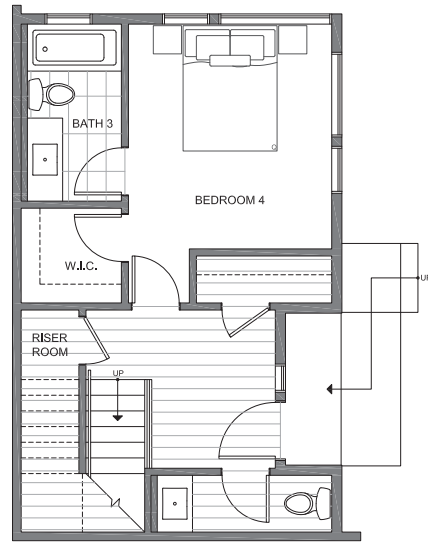
723
4th AVE N

SQ. FOOTAGE: 2,056 SF
ROOF DECK: 354 SF
BEDS: 4
BATHS: 3.5
PARKING: 1 CARPORT

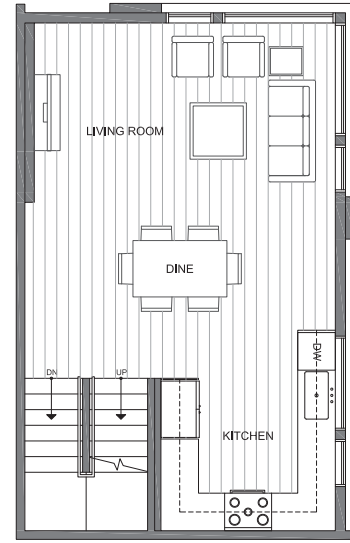
VALLEY ST



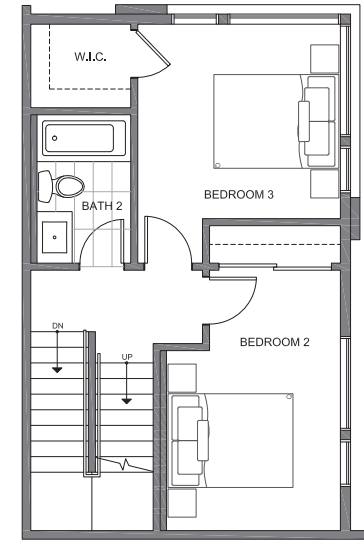
4TH AVE N



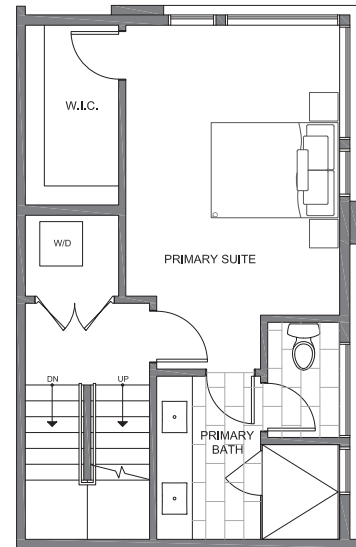
FIRST FLOOR



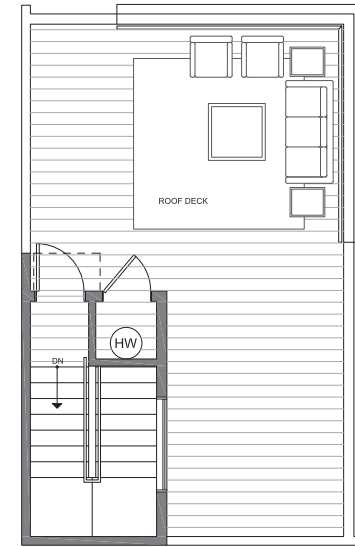
SECOND FLOOR



THIRD FLOOR



FOURTH FLOOR



ROOF DECK

MIRRA ID# 134H

04/22/2023

Disclaimer: Floor plans and site plans are for illustrative purposes only. In a continuing effort to improve products and designs, final construction elevations, square footages, floor plans and/or materials and colors may vary. Buyer to verify to their own satisfaction.

