

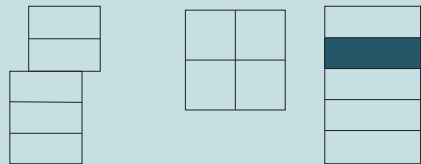
VENNA  
TOWNHOMES



MIRRA  
HOMES

2102B  
NE 85th ST

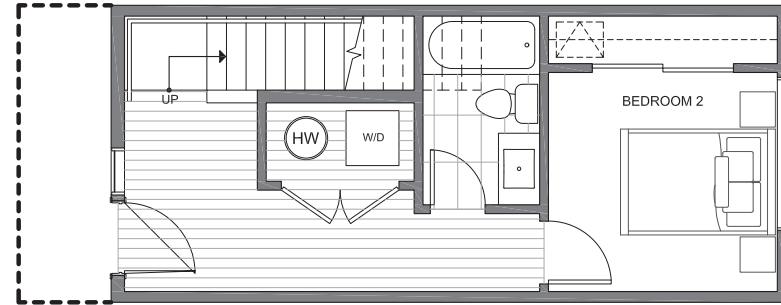
SQ. FOOTAGE: 1,271 sf  
ROOF DECK: 234 sf  
BEDS: 2  
BATHS: 2  
PARKING: 1 SPACE



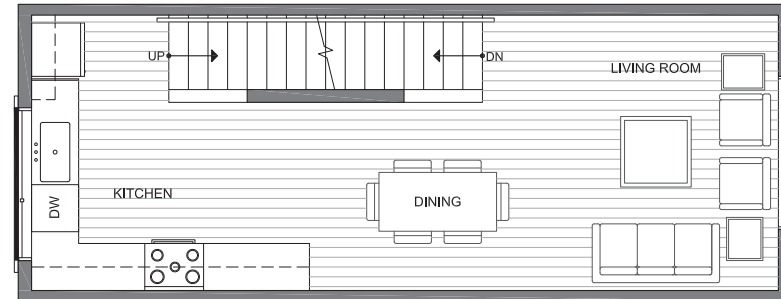
NE 85th STREET

01/03/2022

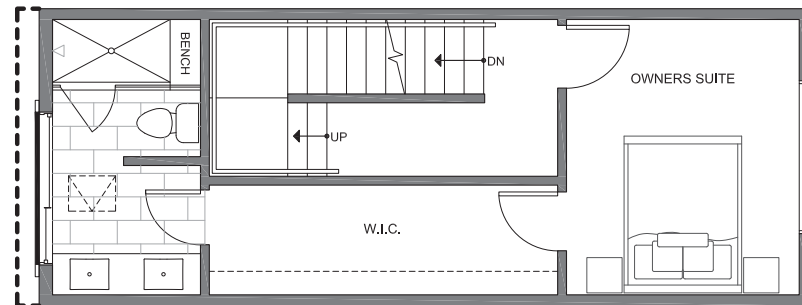
FIRST FLOOR



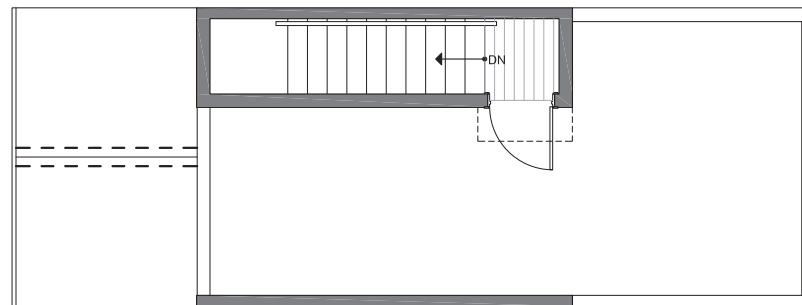
SECOND FLOOR



THIRD FLOOR



ROOF DECK



MIRRA ID#  
102H

