

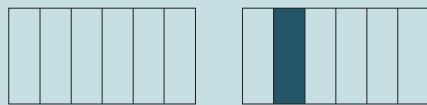
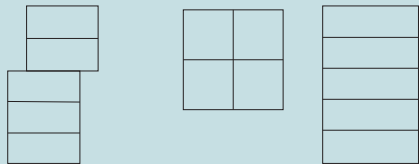
VENNA  
TOWNHOMES



MIRRA  
HOMES

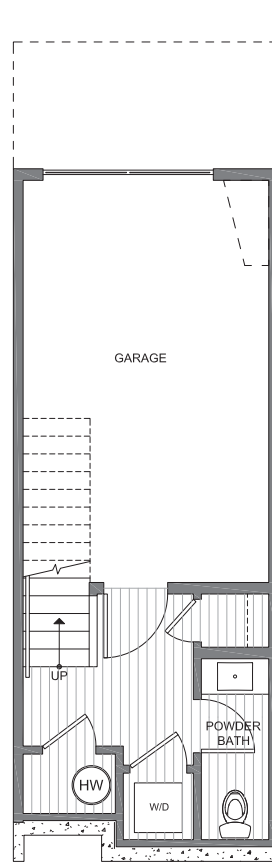
2106B  
NE 85th ST

SQ. FOOTAGE: 1,440 sf  
ROOF DECK: 150 sf  
BEDS: 2  
BATHS: 2.5  
PARKING: 1 GARAGE

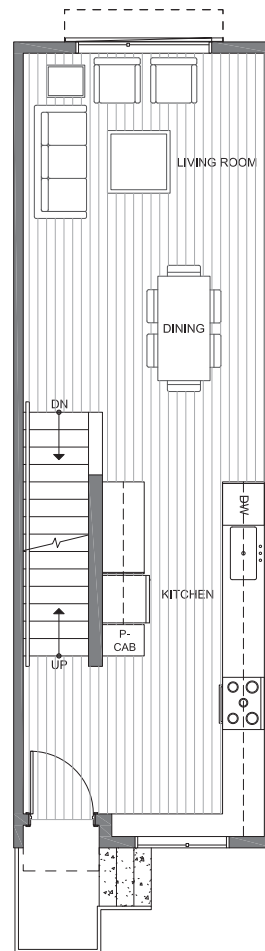


NE 85th STREET

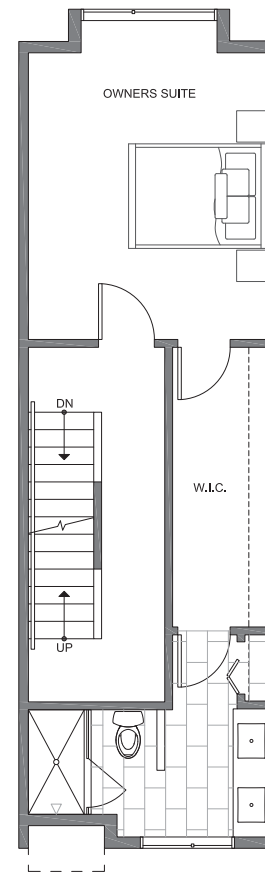
01/03/2022



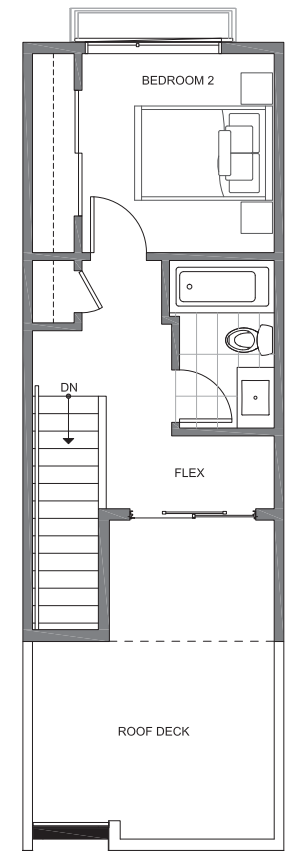
FIRST FLOOR



SECOND FLOOR



THIRD FLOOR



ROOF DECK

MIRRA ID# 101B

