

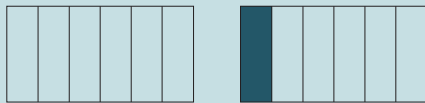
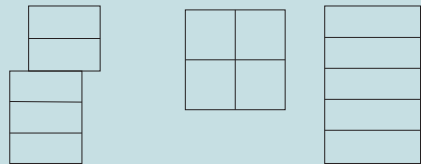
VENNA TOWNHOMES



MIRRA HOMES

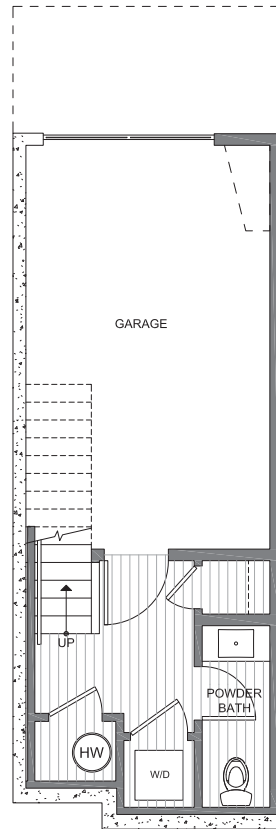
2106A NE 85th ST

SQ. FOOTAGE: 1,433 sf
 ROOF DECK: 150 sf
 BEDS: 2
 BATHS: 2.5
 PARKING: 1 GARAGE

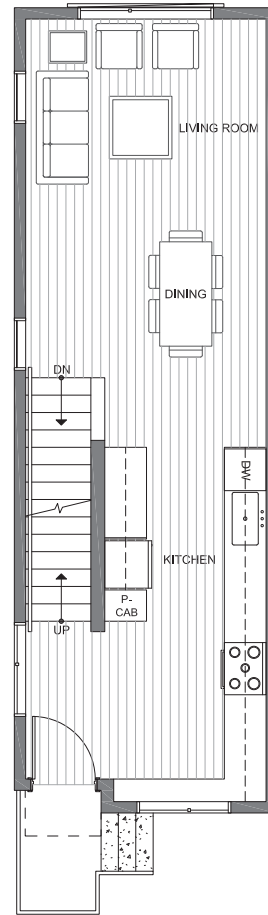


NE 85th STREET

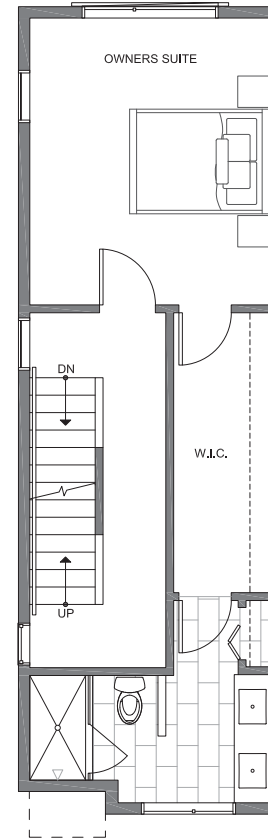
01/03/2022



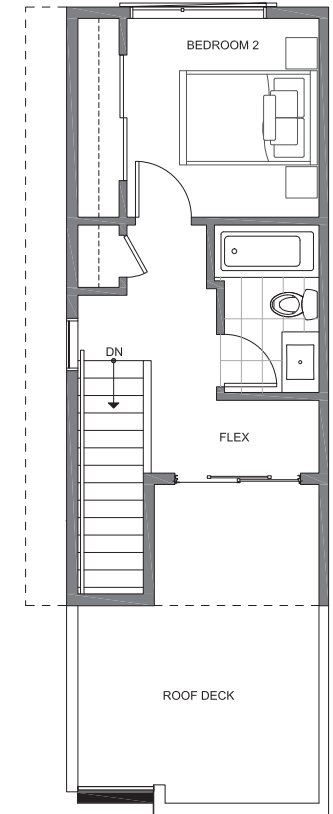
FIRST FLOOR



SECOND FLOOR



THIRD FLOOR



ROOF DECK

MIRRA ID# 101A

